

Data Patterns, a hi-tech manufacturing organization, brings tech to their back-office with e•chain.



design
SPEAKS.

and
how.

“e-chain provides the backbone for effective monitoring and control of our complex project implementations.”

Ganesh N. Rajan,
Head-Process Engineering Group

e•chain Customer:



Tamilnadu, India

www.datapatternsindia.com

Industry:

Hi-Tech

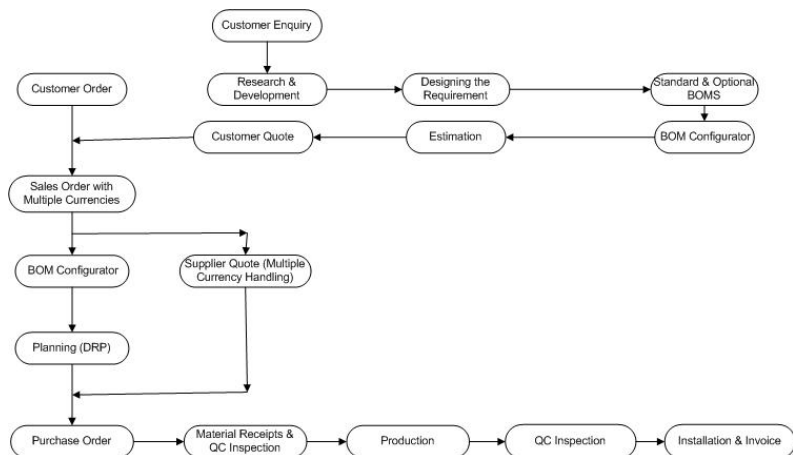
CHAIN-SYS Products / Services:

e•chain

As a subsidiary of Indus Teqsite, Data Patterns taps the wealth of technology and industry expertise available in the Indian market. They perform their manufacturing on-site at the parent company and also provide the full marketing service for Indus Teqsite.

“Data Patterns focuses on building reliable and open building block architecture of various internationally accepted standards such as cPCI, VME, PCI and other Mezzanine standards such as IP, M Module, and PMC. These building blocks are further utilized in order to provide functional solutions in the areas of automatic testing and data acquisition.”

Business Requirements:



* The above mentioned Process including Preparation of different types of BOMs (Standard / Optional) with the help of BOM Configurator.

Solution:

With the help of the Chain-Sys consulting team, Data Patterns implemented the following e-chain modules to align their company operations:

- e-chain Inventory
- e-chain Procurement
- e-chain Point of sale
- e-chain General Ledger
- e-chain Debtors Ledger
- e-chain Creditors Ledger
- e-chain Cash Management
- e-chain Fixed Assets
- e-chain Taxes
- e-chain Bills of material
- e-chain Cost management
- e-chain Shop floor management
- e-chain Supply chain planning
- e-chain Quality
- e-chain Business Intelligence

Point of Sales – Handling Customer Enquiries & Quotations. Estimated BOM and Cost Estimations with Multiple currencies and Revision, Automated Sales Order Conversion from Quotations.

Inventory & Procurement – Preparing Purchase Request, Approved Supplier List, RFQ for Estimated Cost with Multiple currencies, Auto Conversion RFQ into Purchase Order (Import and Local), Purchase Receipts, Transit of Materials, Receipts with Quality Inspections with Lot controls, Material update with Inventory.

Production – Different Types of BOM Creations (Standard / Optional), Combining the Multiple BOMs with the help of BOM Configuration, BOM approval, BOM amendment with different revisions, Planning (DRP), Shop Floor Order, Assembly Pull and Product Completions with Cost Roll ups.

Shipping – Shipping the Finished Product with design document and automated Invoice Generation from Sales Order.

Finance – Cash Forecasting, Automated CL, DL and GL Transactions.

Benefits:

- Data Patterns can now quickly and easily handle BOM amendments and BOM revisions.
- The company can now dynamically generate BOMs through echain's BOM Configurator tool.
- Data Patterns now has the ability to electronically control the BOM approval process through setup of authorized users.
- e•chain provides Data Patterns with an Engineering Change Notice function to update the R&D-Revised Item correction on BOMs and Shop Floor Orders.
- e•chain allows the company to maintain Equivalent Item and Alternative Item information to provide important flexibility in the Production and Purchase Order creation environments.
- e•chain allows Data Patterns employees to electronically route Material Requests for internal material transfers and to approve them through authorized user approvals.
- The new system also allows Data Patterns to account for each of these tasks and track Revenue, Cost, and Profit at various levels of granularity.