

CHAIN•SYS

ORACLE® Platinum
Partner

R12 – Technical Upgrade or Reimplementation?

Presenters:

Austin Davis | Marketing Chain-Sys

Sundu Rathinam | Technology Chain-Sys

Time to Upgrade or Reimplement?

Oracle E-Business Suite Releases

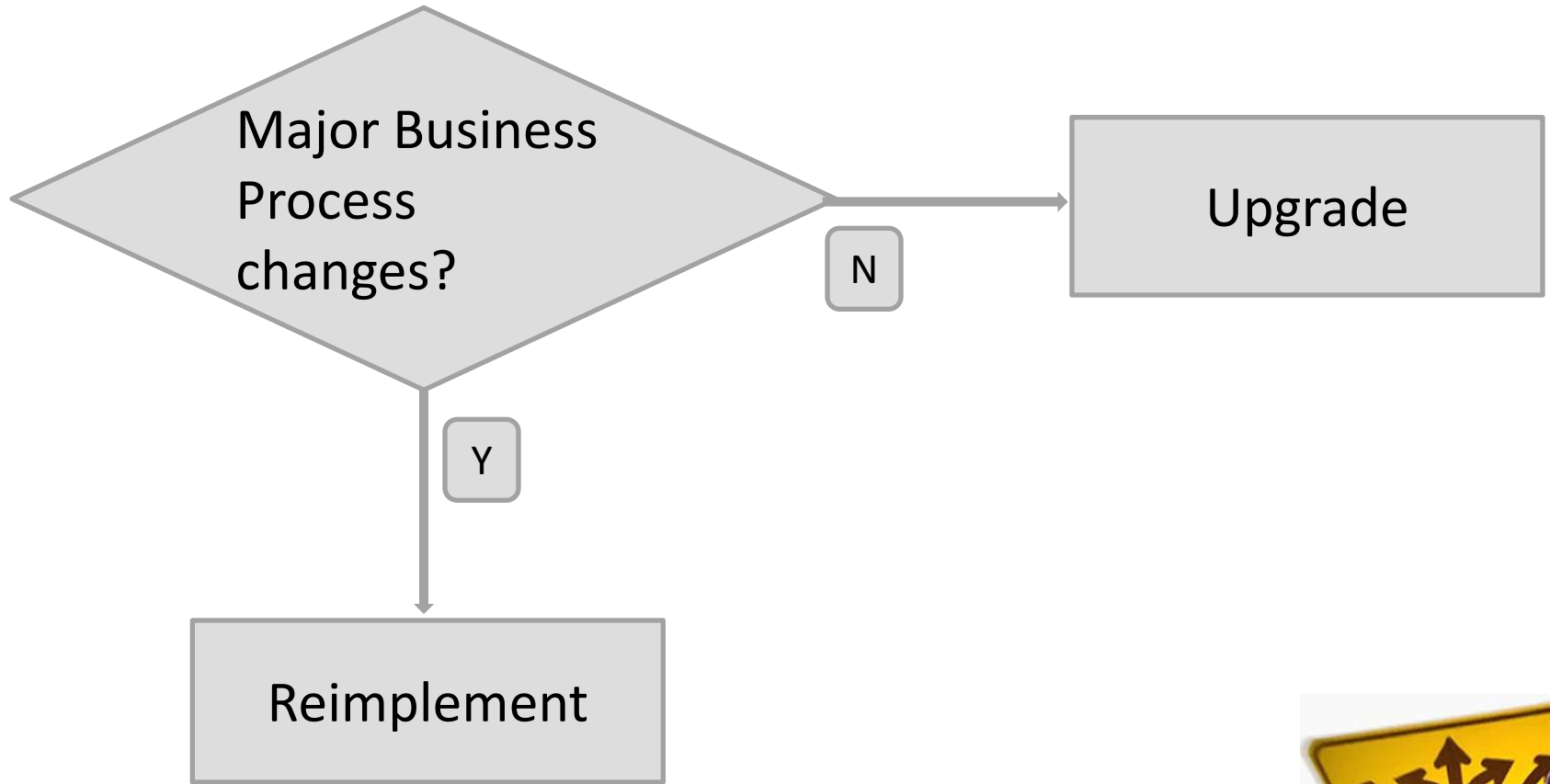
Release	GA Date	Premier Support Ends	Extended Support Ends	Sustaining Support Ends
11.0.3	May 1999	Feb 2007	Not Available	Jan 2009
11/1	May 2000	Jul 2006	Not Available	Indefinite
11/2	Oct 2000	Jul 2006	Not Available	Indefinite
11/3	Jan 2001	Jul 2006	Not Available	Indefinite
11/4	Jun 2001	Jul 2006	Not Available	Indefinite
11/5	Sep 2001	Jul 2006	Not Available	Indefinite
11/6	Jan 2002	Jul 2006	Not Available	Indefinite
11/7	May 2002	May 2007	Not Available	Indefinite
11/8	Nov 2002	Nov 2007	Not Available	Indefinite
11/9	Jun 2003	Jun 2008	Not Available	Indefinite
11/10	Nov 2004	Nov 2010	Nov 2013	Indefinite
12	Jan 2007	Jan 2012	Jan 2015	Indefinite
12.1	May 2009	May 2014	May 2017	Indefinite

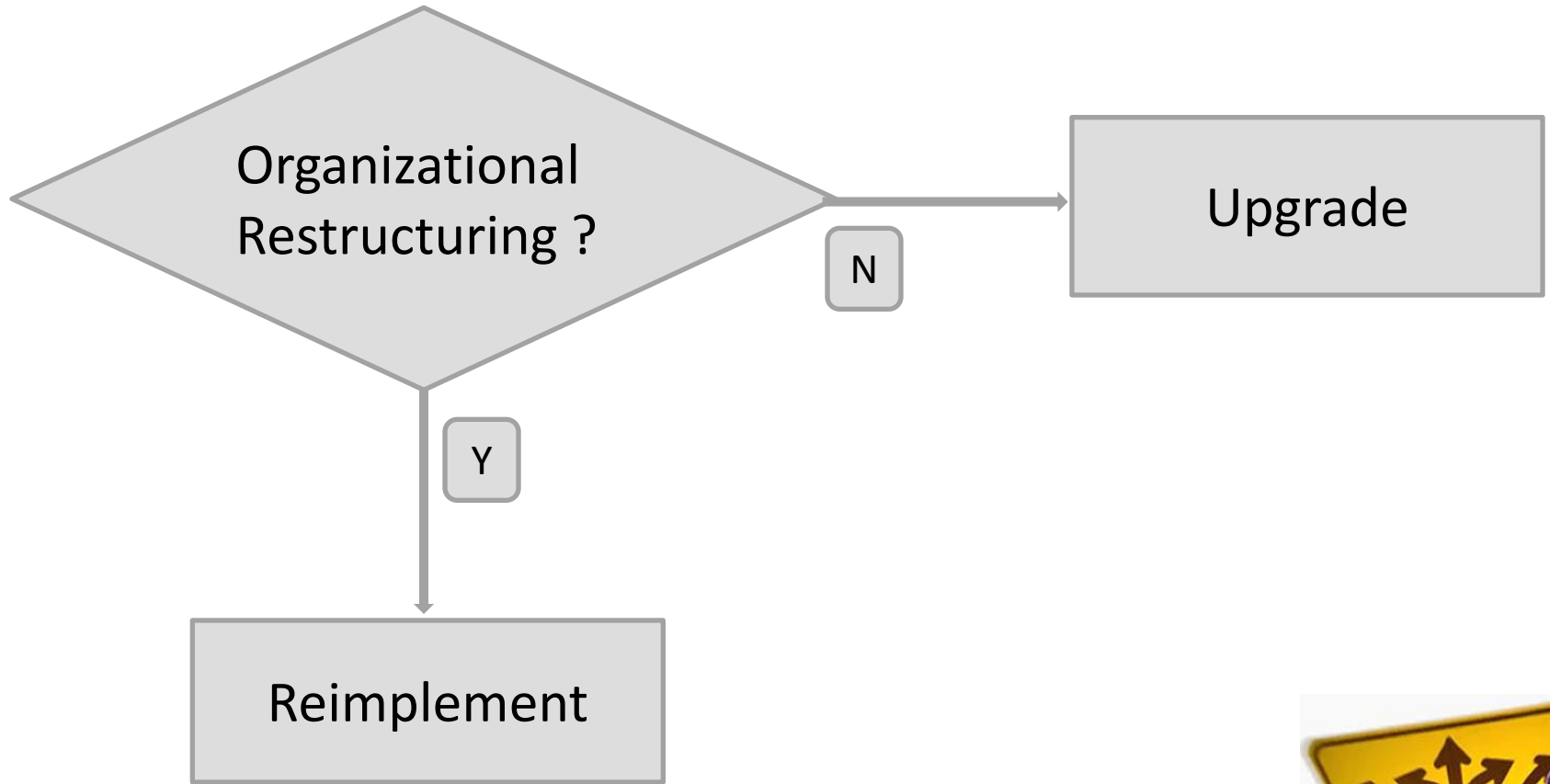
What release you are in?

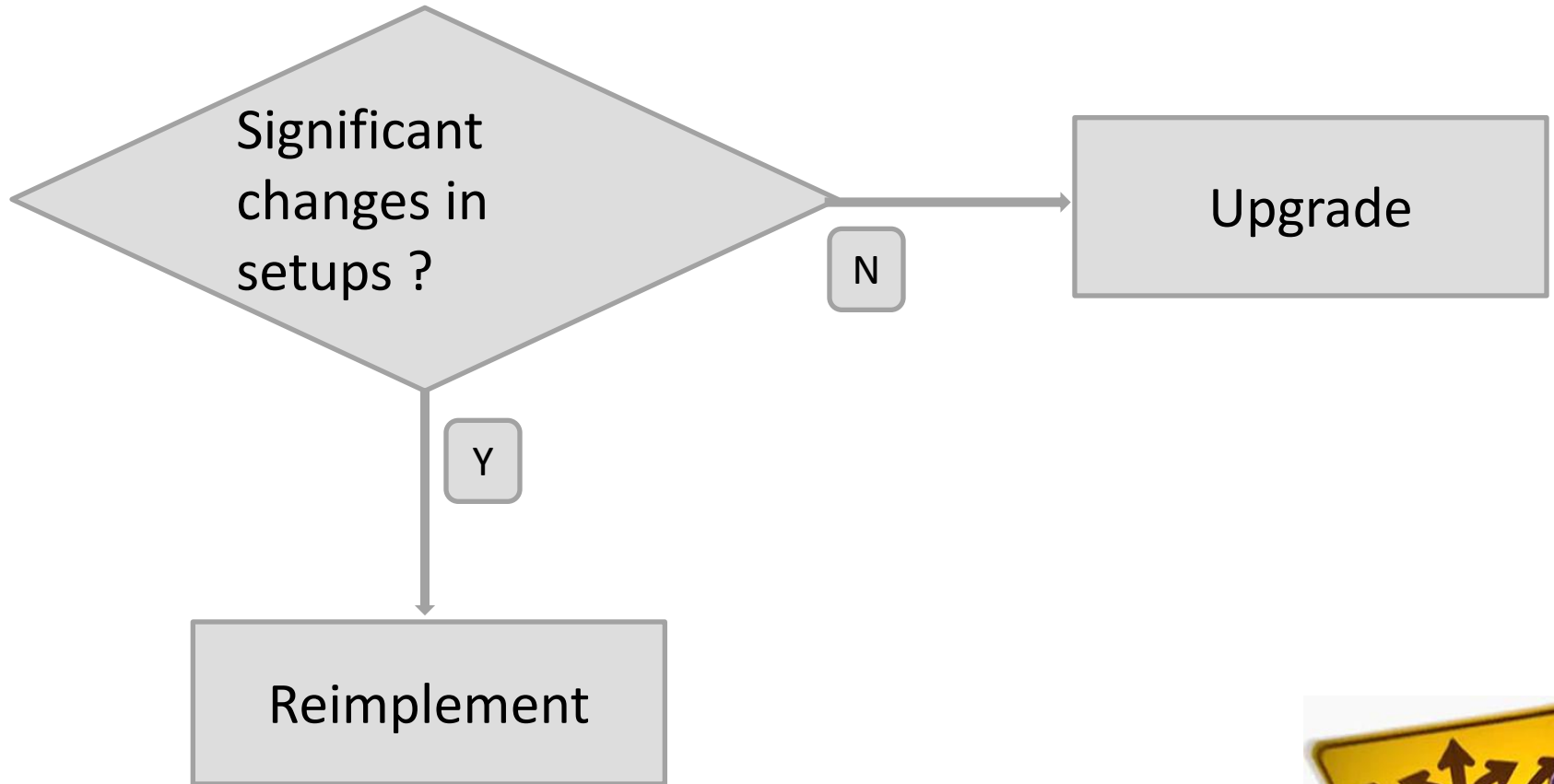
- 11.5.9 and above : You can follow straight technical upgrade.
- Else: You can Reimplement or do 2 technical upgrades.

Why Upgrade or Reimplement?

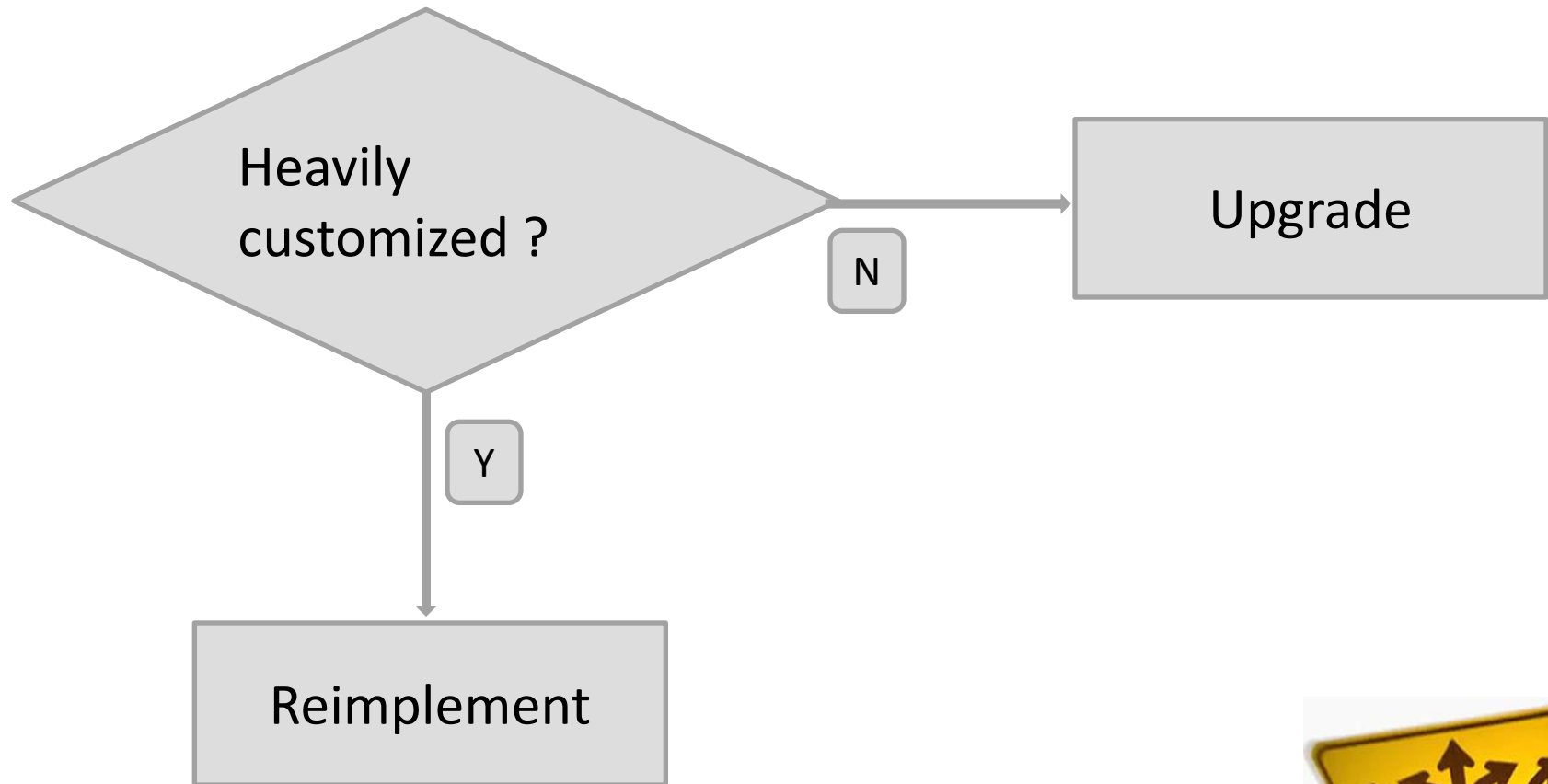
- Take advantage of the new features in R12, especially in the Financial module
- Avoid Premium and Extended Support fees to Oracle
- Do away with any 11i customizations, if they are available as standard features in R12
- Use it as an opportunity to improve your processes and clean up the data.



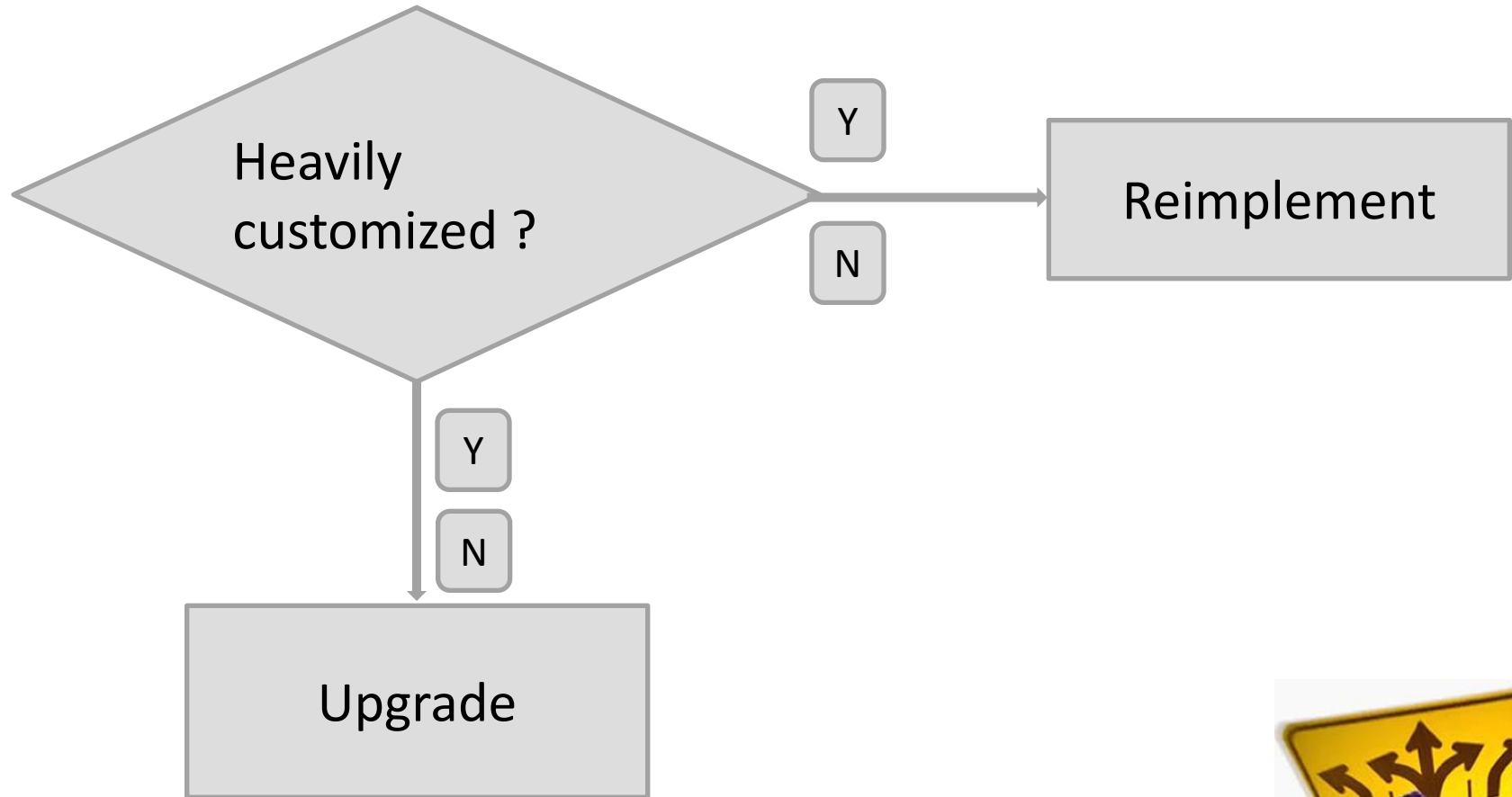


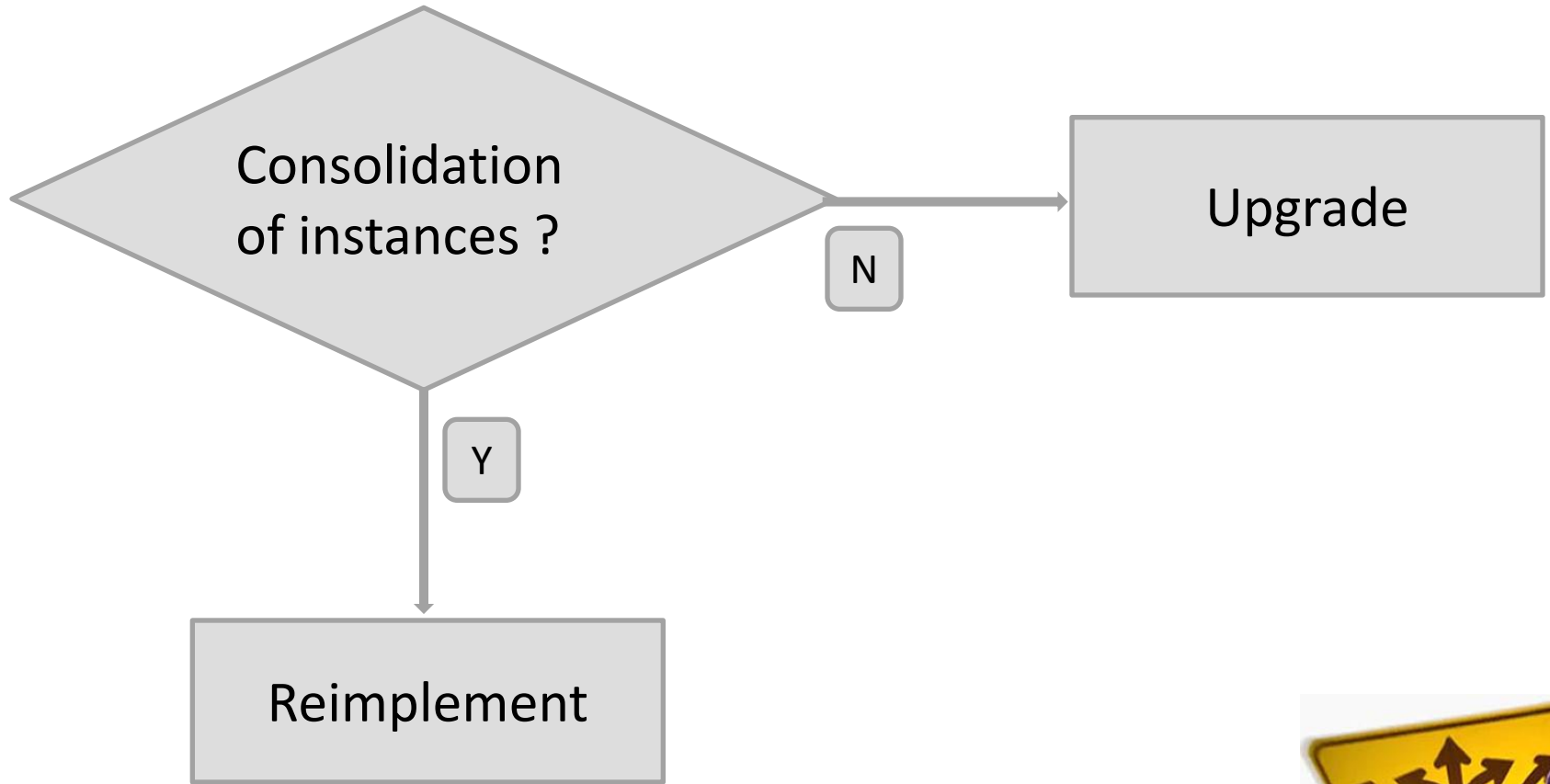


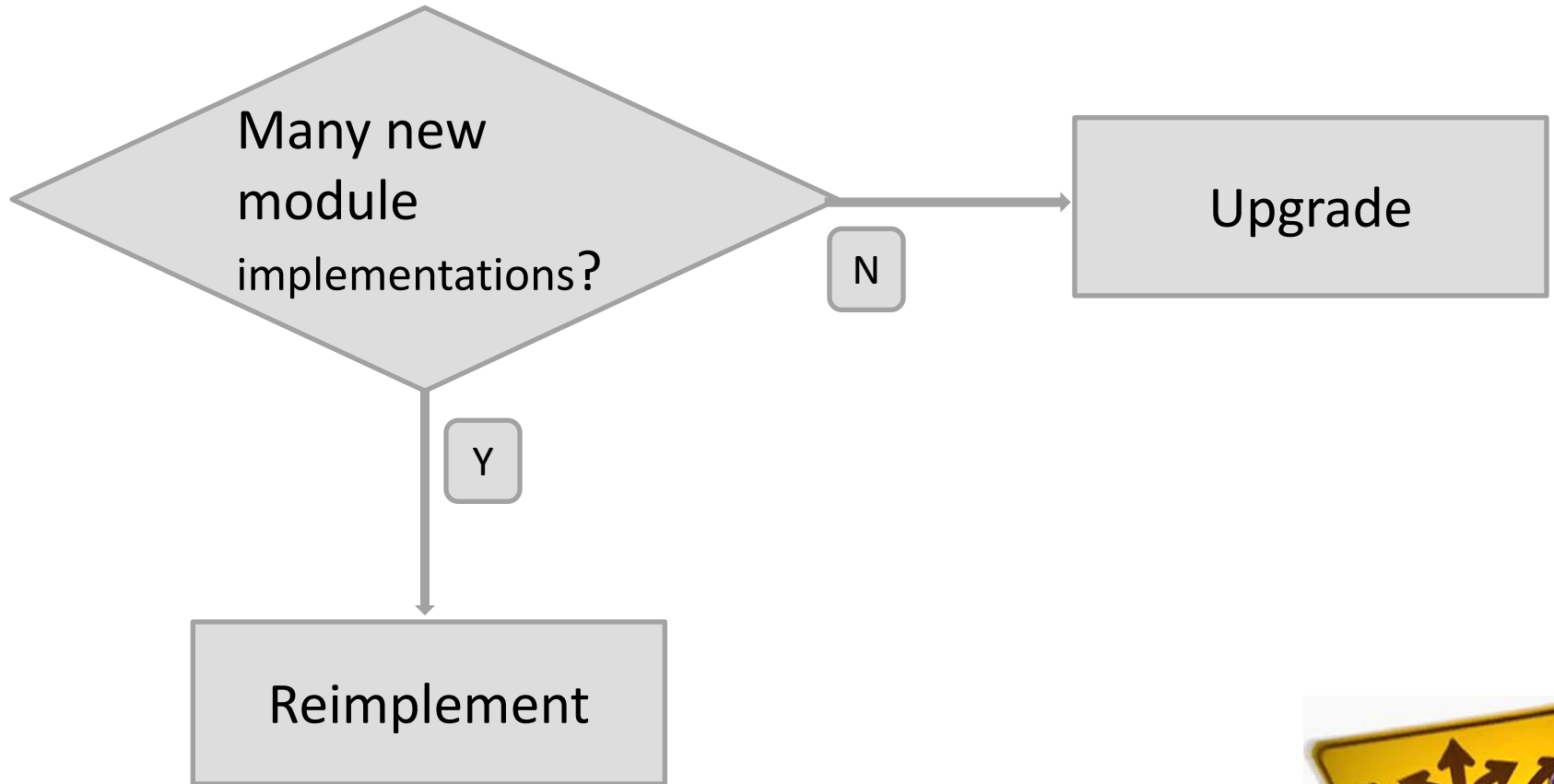
Most Customizations are available as standard features in R12.



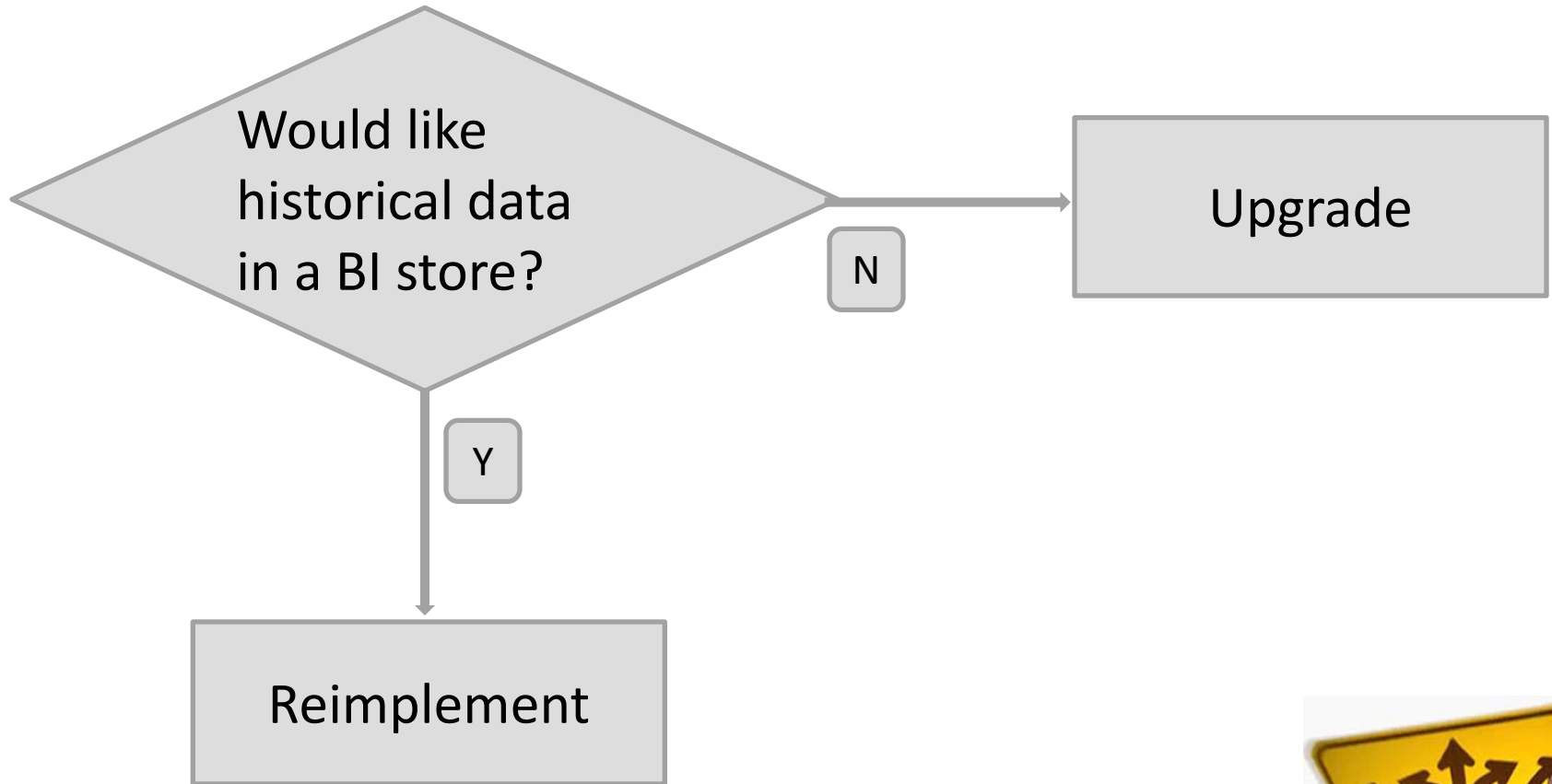
Customizations are core to the business and cannot be given up.

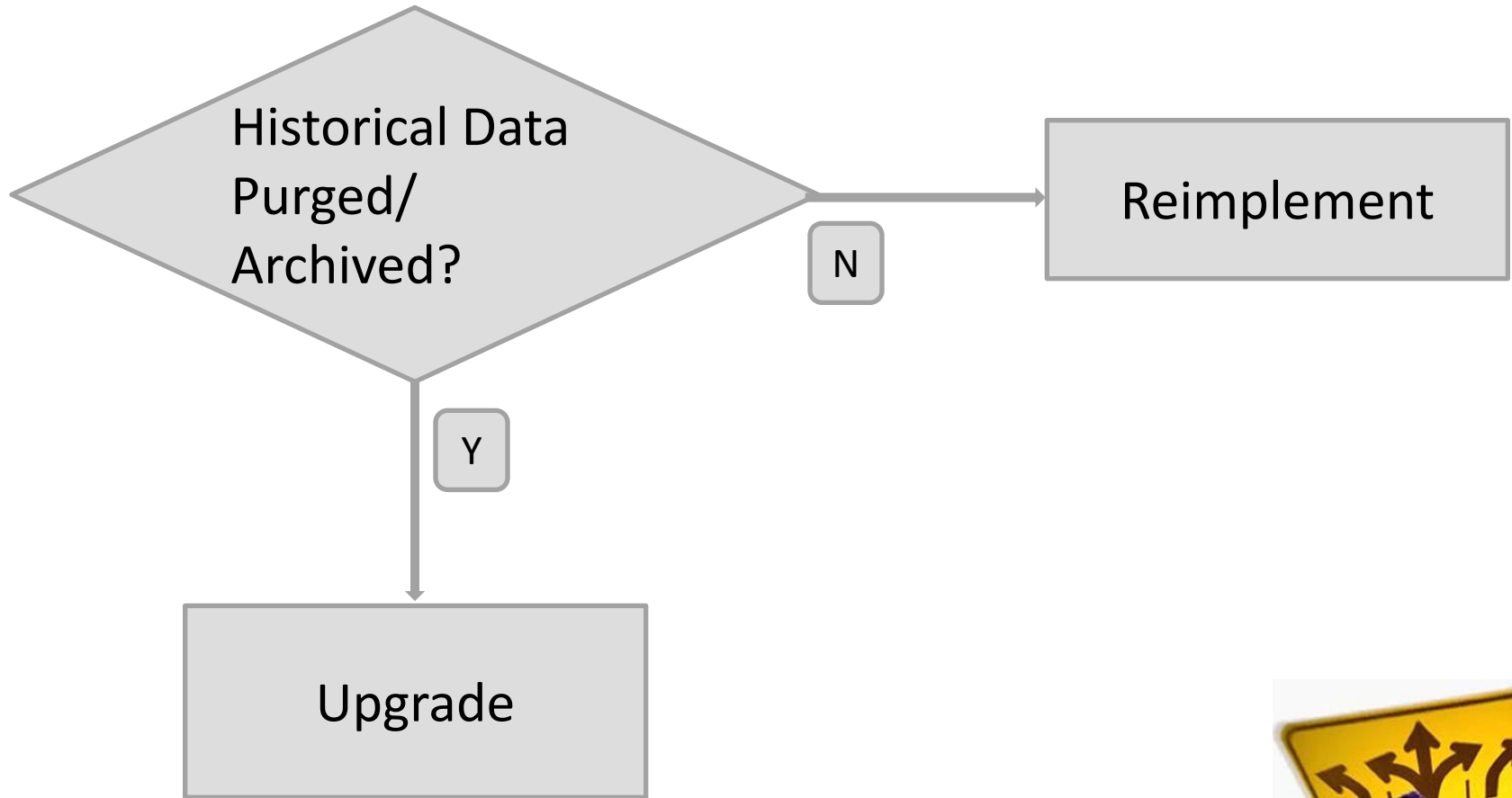






Historical Data has not been purged/archived.





A Sample Decision Chart

Factor	Weight	Votes for Reimplem ent	Votes for Upgrade
Major Business Process changes?	10	10	
Organizational Restructuring?	10		10
Significant changes in setups?	7	7	
Consolidation of instances?	10		10
Most Customizations are available as standard functionality in R12	6	6	
Customizations are core and cannot be given up in the R12	10	n/a	n/a
Would like historical data in a BI store?	7	7	
Historical Data Purged/ Archived?	7	7	
TOTALS		37	20

Another Sample Decision Chart

Factor	Weight	Votes for Reimplement	Votes for Upgrade
Major Business Process changes?	10		10
Organizational Restructuring?	10		10
Significant changes in setups?	7	7	
Consolidation of instances?	10		10
Most Customizations are available as standard functionality in R12	6		6
Customizations are core and cannot be given up in the R12	10		10
Would like historical data in a BI store?	7	7	
Historical Data Purged/ Archived?	7	7	
TOTALS		21	46


Chain-Sys can help in

- Study and recommend right migration path
- Cost effective appMIGRATE product for data migration
- appBI product for historical data
- Data Migration Factory (45 days)
- Data Migration on SaaS model
- Technical upgrade in 3 weeks.

Approaches

- *Standard Approach*—prepare data now in 11i and follow the Oracle standard upgrade path from 11.5.10.
- *Clean R12 Implementation* with new business/reengineered processes and cleaned data.
- *Upgrade* to R12 and then re-engineer the business process and clean up the data

Standard Approach

- Prepare data now in 11i and follow the Oracle  standard upgrade path from 11.5.10.
- Cons:
 - must upgrade first if you are a older release of 11i
 - You lose new R12 functionality
 - You still need to clean your existing 11i data
 - Do not miss out on new functionality!

New Functionality !


Oracle development has focused on improving the ability of EBS to better manage complex global businesses, especially where organizations are centralizing their applications into a shared service environment. 18 new products with almost 2500 enhancements, including:

- Ledgers and Ledger Sets - replace Sets of Books
- Financials Accounting Engine – SLAM
- Tax Engine - E-Business Tax
- Cross Organization Responsibilities - MOAC

Clean Implementation (aka re-implementation)

- Restructuring of MFG, FIN, INV Process
- All business process re-engineering
- All Master and Transaction Data
- All Setups Data
- All Historical Data
 - Into ERP
 - Into Data Warehouse
- New data from Legacy systems

Upgrade to R12

- Run Oracle's Standard  Data scripts
- Restructure your Data
 - Data maintenance
 - Mass extract
 - Mass Load
 - New Data from legacy system

Historical Data Migration

Do you want to take all your historical data into R12 via a technical upgrade and then on the top spend money on a purge/archive solution?



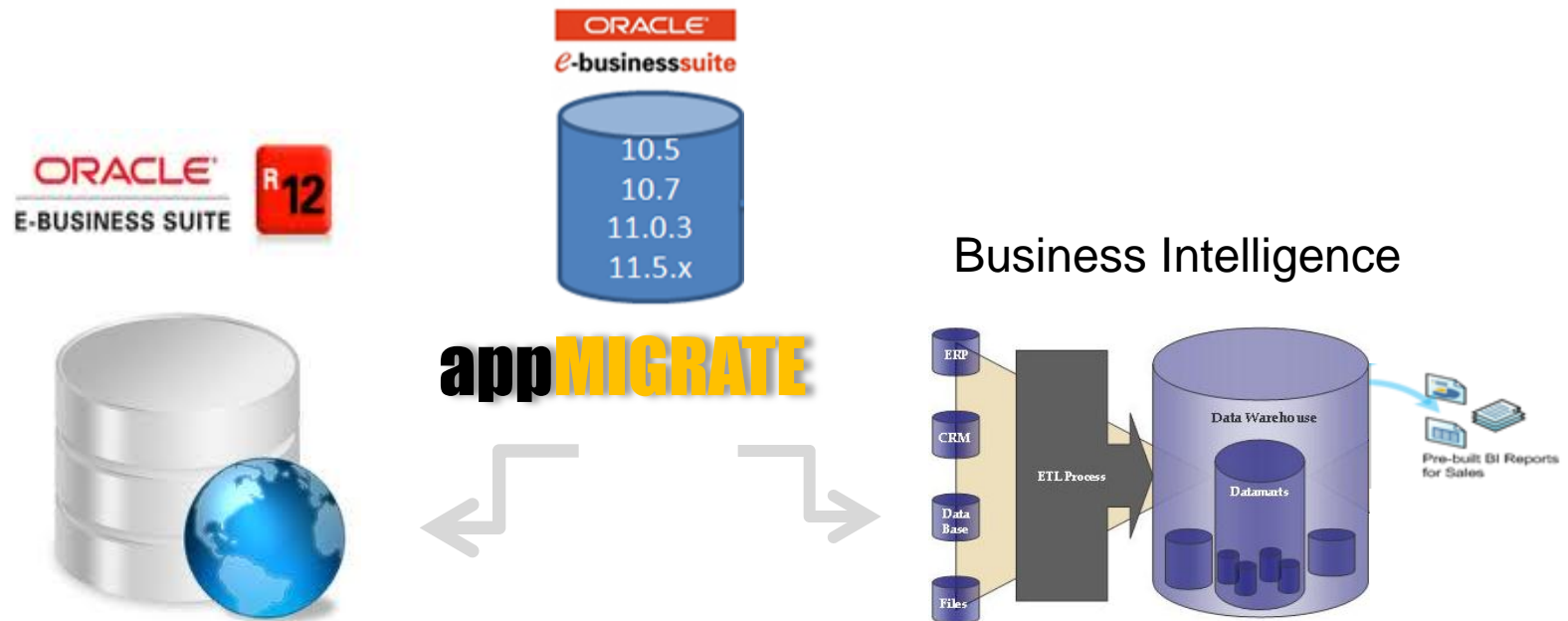
Why not use the purge/archive budget to do a clean reimplementation and push historical data into a usable BI?

Hmmm?

You decide.

Migrate and Report: Have it your way!

What if you can have all your data? Migrate what you want, warehouse the rest. If the price is right....



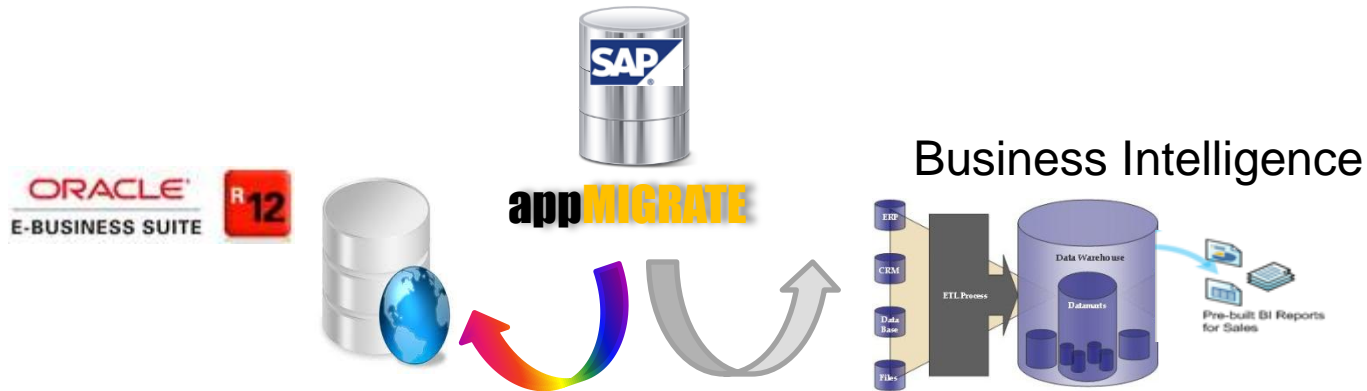
Migrate and Report: Have it your way!

Option 1: Migrate only Open Transactions



Option 2: Migrate Open and Historical Transactions

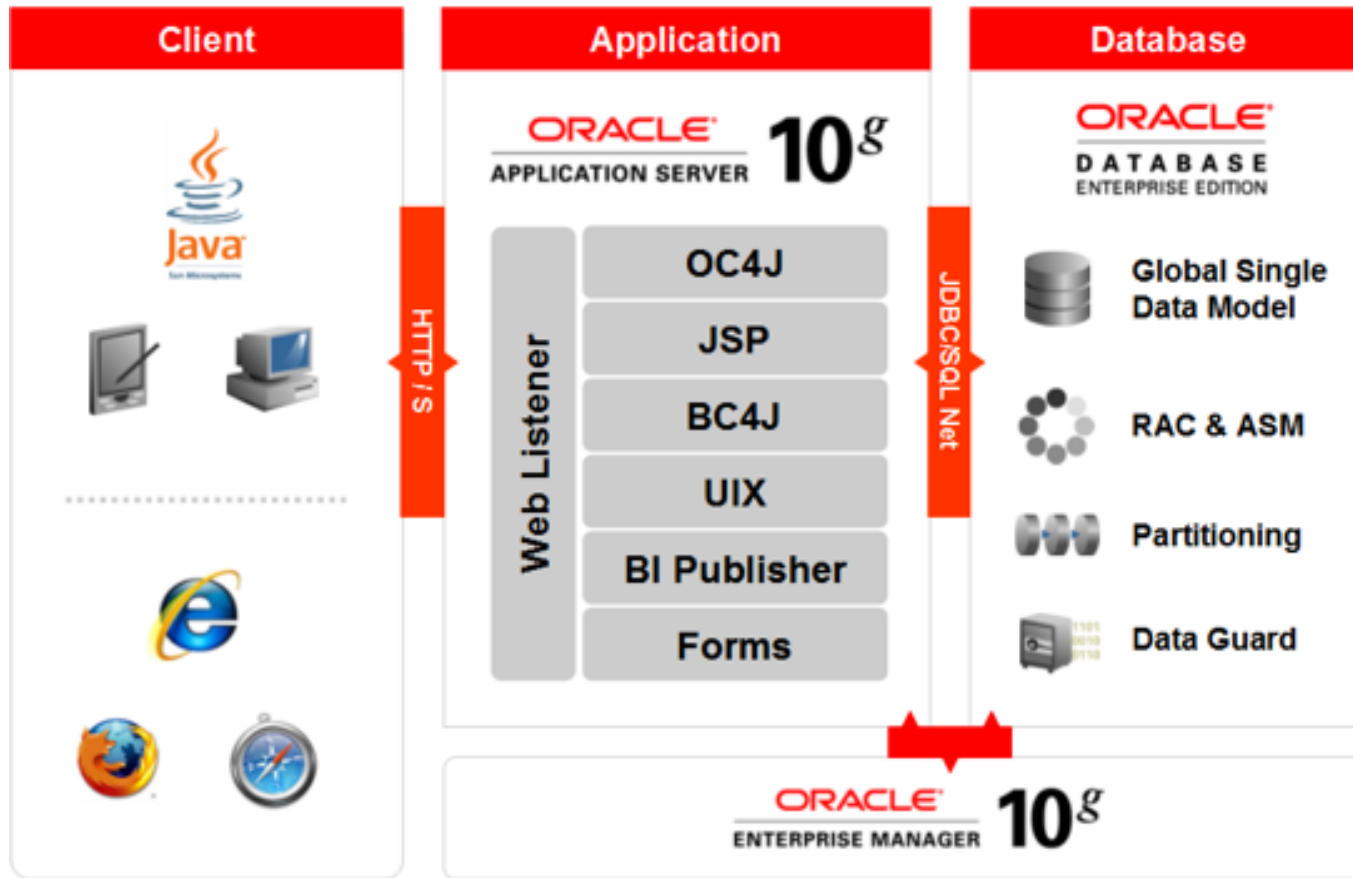
Option 3: Migrate Open and Partial Historical Transactions



Mandatory Requirements

- Stage for 12.1.3
- Adequate Backup device space
- Oracle Metalink access for patches to be downloaded and Support
- Multi Org should be enabled if not already in place

R12 Architecture



Changes from R11i to R12

- Oracle TOOLS Oracle Home (Developer) 10.1.2.3.0
- Oracle WEB Oracle Home (Web Tier) 10.1.3.4.0 (SOA and BPEL Enabled)
- New TOP (INST_TOP)
- Only Three tops at the higher level (apps,db and inst)
- J2SE Native Plugin (1.6.0 Update 18 – 20)
- JDK 1.5

Steps for R11i to R12 upgrade

- Upgrade DB to 10.2.0.4 or 10.2.0.5
- Convert to OATM (Oracle Applications Table space Model)
- Apply additional Database patches
- Apply the Patches in 11.5.10.2 Env before proceeding to Upgrade
- Apply TUMS patch and resolve the pre-req conflicts
- AD preparation Scripts for R12
- Run R12 Rapidwiz to create R12 Code tree.
- Apply the R12 Patches on the newly created Tech Stacks and Environment (Considered as a lengthy process)
- Run Rapidwiz to configure DB, Tech_stacks and create R12 scripts
- Online Help Patches
- Completing the Upgrade with Login test and concurrent tests.
- Gathering statistics for CBO

Estimated Time Line

- Estimated Time Line for each instance upgrade is approximately 136 Hours (Based on the CPU and server capability)
- It Includes DB Upgrade 10.2.0.3 to 10.2.0.4
- The Upgrade will be done for one node.
- Cloning and Copying of files from the server of 11.5.10.2 is not calculated

Pre-requisites

- Custom objects created in the “Apps” schema if any, may be needed to be taken as backup and drop the same.
- A network connection has to be present to deal with Oracle Knowledge base and oracle support centre.
- If some OS patches are recommended by Oracle then and there during the point of time, the same has to be updated with the servers with the help of the vendor and to be done by the sysadmin of the client.
- If OWC is required, a dedicated landline No. is required and the system to be presented with both Intra and Inter network provisions.
- The download of the patch based on the pre-upgrade tool to be downloaded and to be moved to the server
- The stage should be moved to the server.
- Corruption of the files in the stage to be analyzed once transferred to the server.
- Technical support may be required from the client then and there during the process of upgrade.

Post-upgrade Steps

- Post Upgrade steps will be carried out only on the basis of Oracle Guide (Custom objects to be retained in the DB.
- May require additional hardware set during the process of Post-upgrade to keep the backup of the upgraded instance.
- The backup policies to be retained immediately after the upgrade is completed.

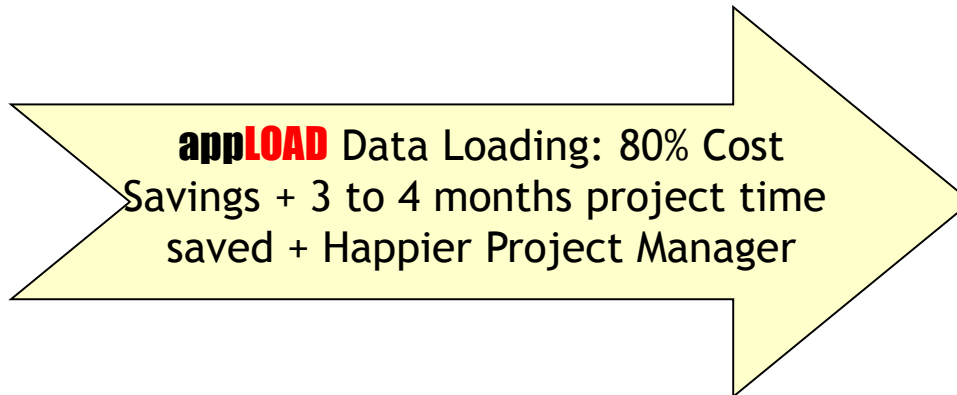
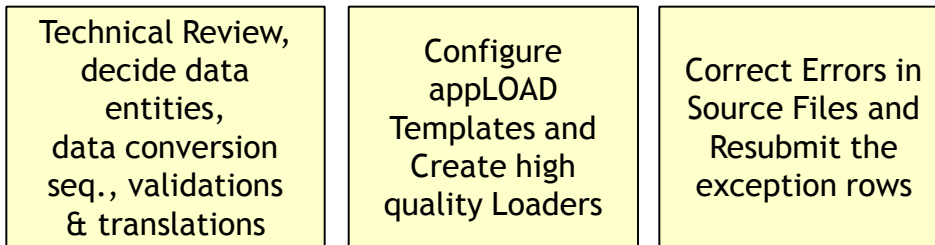
Accelerate you data into eBS !

Data Loading
Data Extraction
Data Interfacing
Data Migrating



What if you did not have to Code?

appLOAD is the **next generation data loading** tool for Oracle E-Business Suite R12/11i.



The Key to Clean data!



appMIGRATE will cleanse your data using:

- Data pre-validations (configurable)
- Business pre-validations (add your own)
- Automatic Cleansing (configurable)
- Data Consolidation (Based on sound and User configurable)

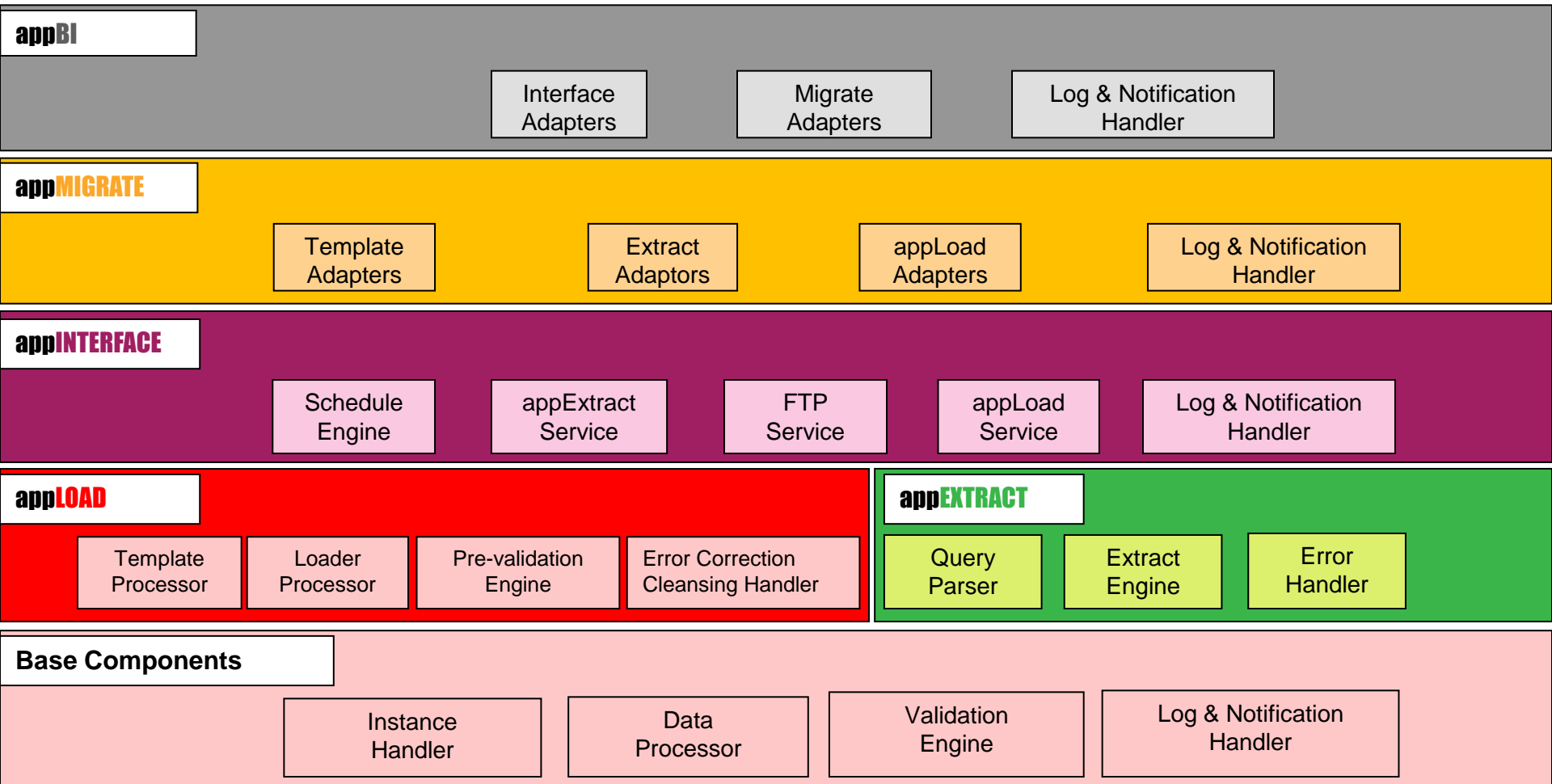
What if you did not have to Wait?

appMIGRATE does not load data using:

- Excel Macros—not easy to change or update
- Front-end eBS forms—error prone



Products Overview



The Right Migration Tool

appMIGRATE™ The complete legacy migration tool

appEXTRACT™ the data extraction tool

- ✓ Data extraction engine
- ✓ Data base instance handler
- ✓ Query Parser

appINTERFACE™ data interfacing tool

- ✓ Web interface service

appLOAD™ the data uploading tool

- ✓ Data Validation
- ✓ Data Cleansing
- ✓ Error handler
- ✓ Staging Table
- ✓ FTP file transfer scheduler
- ✓ Schedule engine
- ✓ Transaction log and notification handler

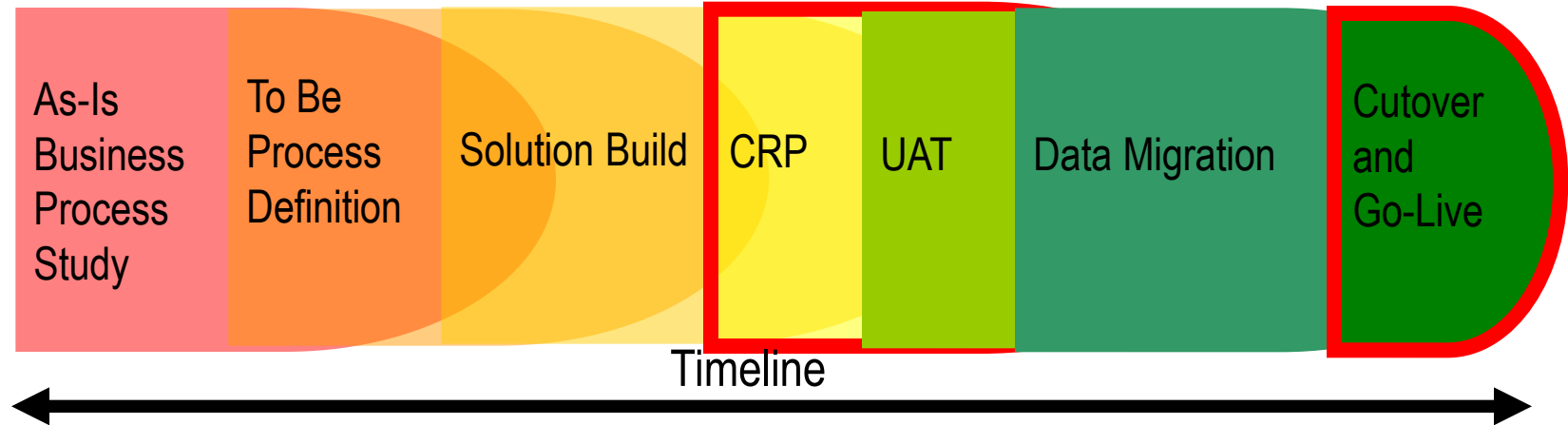
appMIGRATE™ The Next Generation in Data Migration

- With rare exceptions, there are no “greenfield” implementations, timely and accurate data conversion is a necessity
- Migration is made up of 3 activities, called ETL for:
 - **Extraction** (of legacy data to be converted)
 - **Transformation** (cleanup/re-format data for new system)
 - **Load** (data in new systems for CRP, Testing and Production)
- Data migration is a low visibility, high risk activity, which only grabs management attention when it is late or flawed
- Building on proven technology and implementation best practices, Chain•sys Solutions has an efficient, accurate and very cost effective approach to your most complex data conversions
- Methodology for migration and datawarehousing !

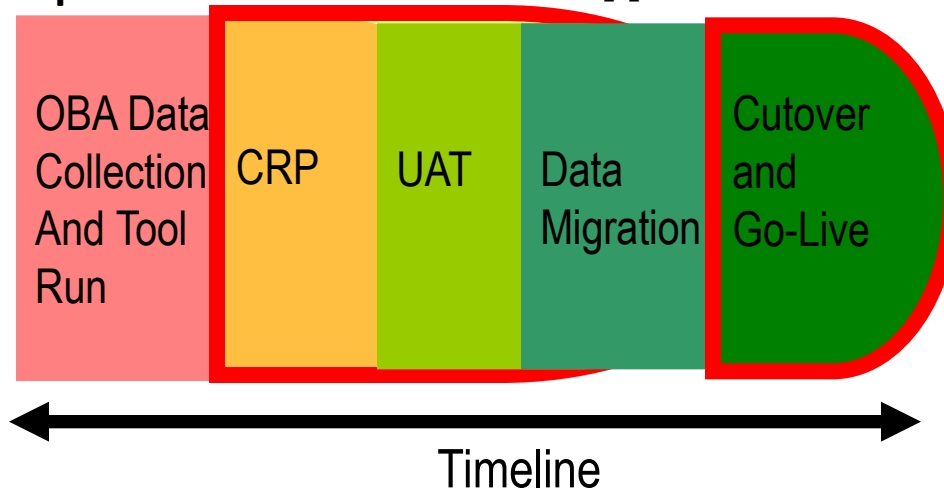


Delivering Value for Migration

Traditional Oracle EBS Implementation Cycle



Implementation with OBA & appLOAD

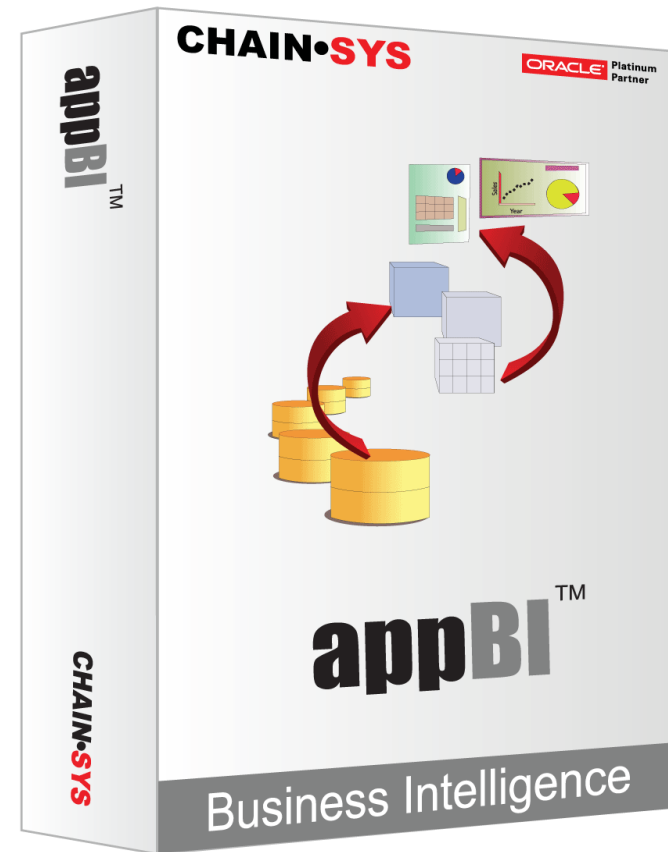


Delivering Value for Reporting

appBI™ Out of the box Business Intelligence

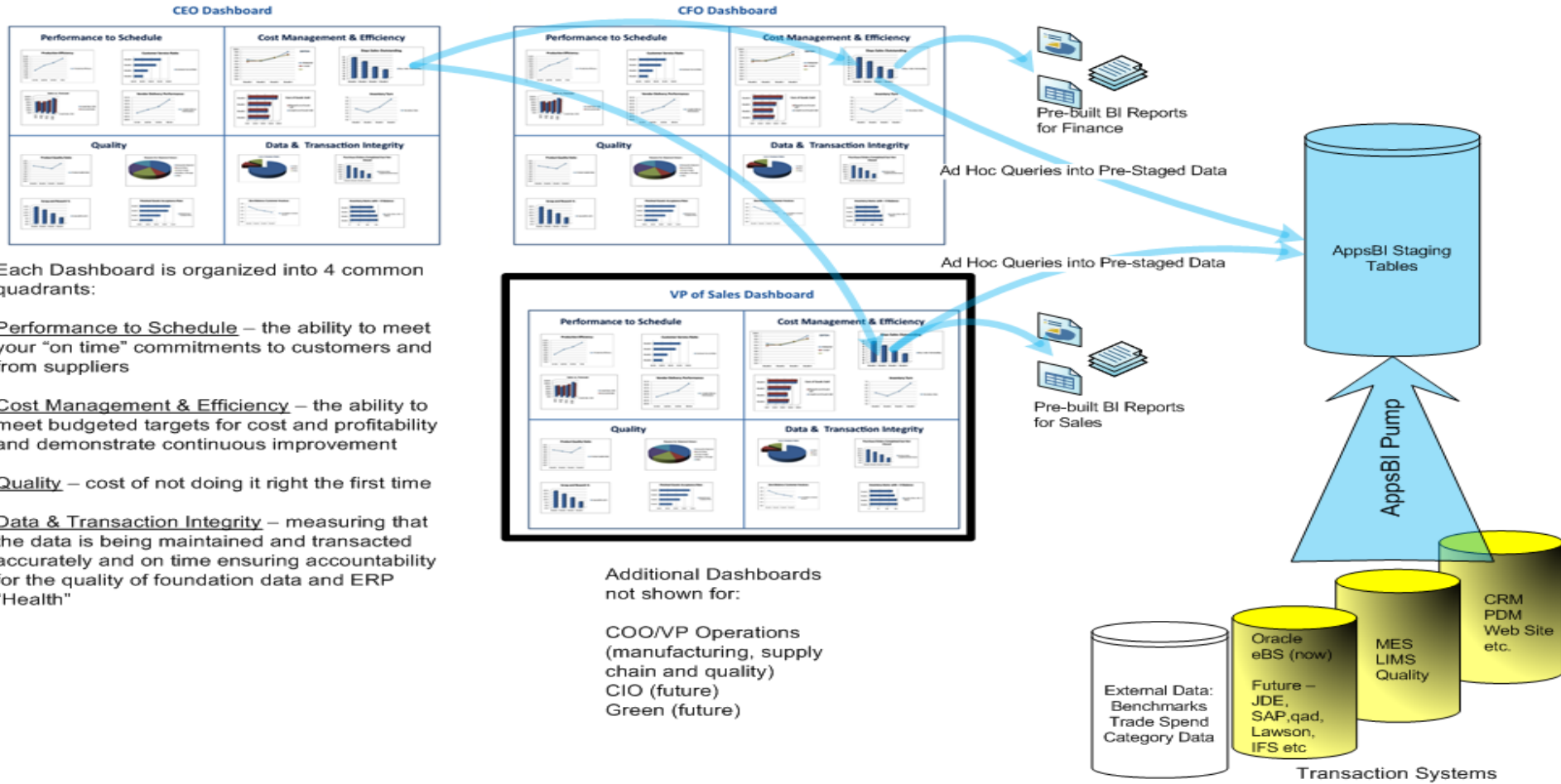
appBI is built for scalability,
reliability performance and
longevity

- ✓ Oracle database and OBIEE for data storage and presentation
- ✓ Data integration built in Java and PL/SQL
- ✓ Based on proven Chain-sys technology, more than 10 years of experience working with Oracle



Delivering Value for Reporting

Reference Architecture



Each Dashboard is organized into 4 common quadrants:

Performance to Schedule – the ability to meet your “on time” commitments to customers and from suppliers

Cost Management & Efficiency – the ability to meet budgeted targets for cost and profitability and demonstrate continuous improvement

Quality – cost of not doing it right the first time

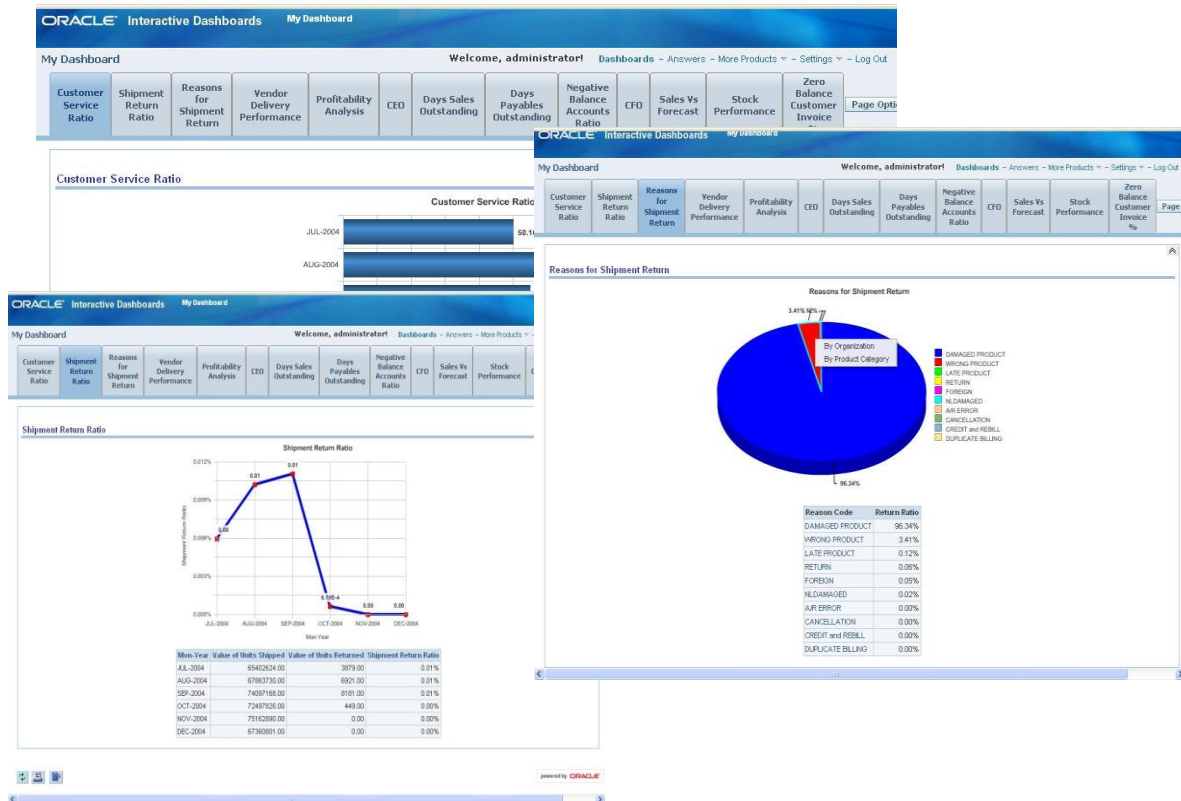
Data & Transaction Integrity – measuring that the data is being maintained and transacted accurately and on time ensuring accountability for the quality of foundation data and ERP “Health”

Additional Dashboards not shown for:

- COO/VP Operations (manufacturing, supply chain and quality)
- CIO (future)
- Green (future)

Delivering Value for Reporting

EXAMPLE – CUSTOMER SERVICE DASHBOARD & DRILL DOWNS



Line management gets a high level view of performance, with the ability to “drill down” into the detail for root cause identification. All of this is taking place within business intelligence data structure and does not impact the performance of the ERP system.

CHAIN•SYS R12 upgrade/implementations



11.5.7 > 12.1.2 Upgrade – 400 + Inventory Organizations



11.5.10.2 > 12.0.6 Upgrade



12.0.6 Implementation – 35 Complex customizations



12.1.1 Implementation – 45 day implementation



12.1.1 Upgrade– real-time integration to external HRMS



12.1.1 Upgrade – from 11.5.10.2

Oracle EBS Implementation Experience

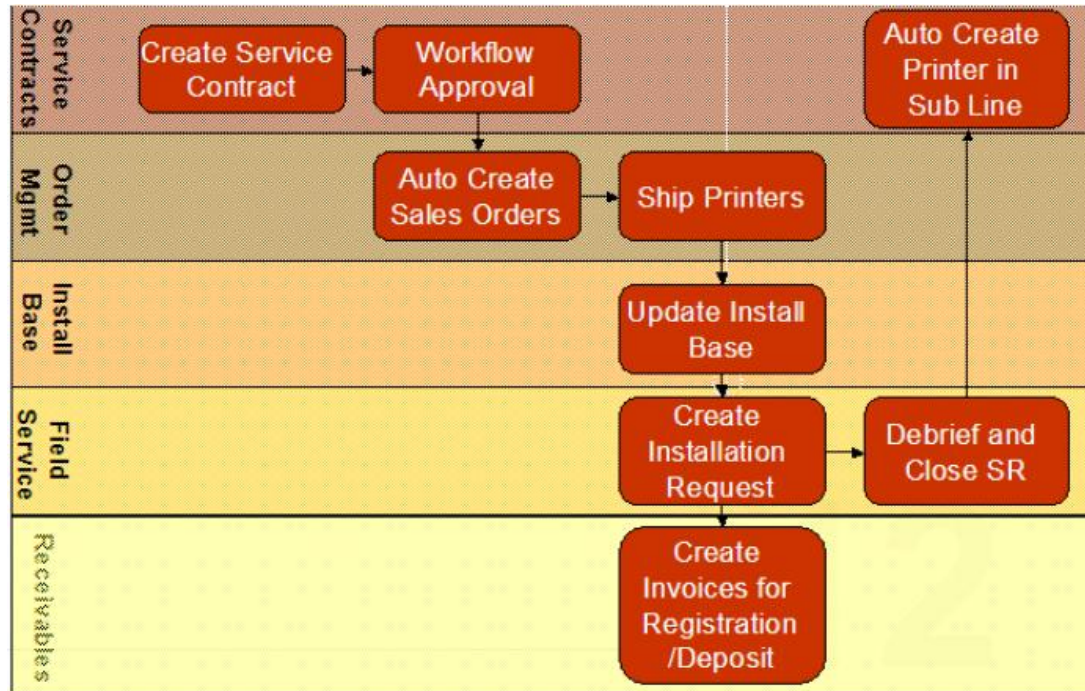


The Key for any ERP success is in the efficiency of implementation. With OBA we are sure we are on the right track to deliver the organization's expectations and provides us with a huge and good scope of scalability. CFO – Wepsol

Oracle EBS R12.0.6 Implementation

Modules Implemented:

- General Ledger
- Payables
- Receivables
- Cash Management
- Fixed Assets
- Order Management
- Purchasing
- Inventory
- Service Contracts
- Advanced Pricing
- Field Service
- Install Base
- Spares Management
- Territory Management
- 35 Complex Customizations



Oracle EBS Implementation Experience



“Patel has a 50-year legacy in this industry, and we know only robust solutions like Oracle Financials will help us to control and maintain operations. We have better control over operational costs and can minimize revenue loss by using Oracle Financials to manage our financials.” *AGM – PIL*

Oracle EBS R12.1.1 Implementation

Modules Implemented:

General Ledger

Payables

Receivables

Cash Management

Fixed Assets

Integration between 450 sites

financial data to EBS using Appload.

45 Day Implementation

[Link to case study on oracle site:](#)

Oracle EBS upgrade Experience

Action Construction Equipments Limited

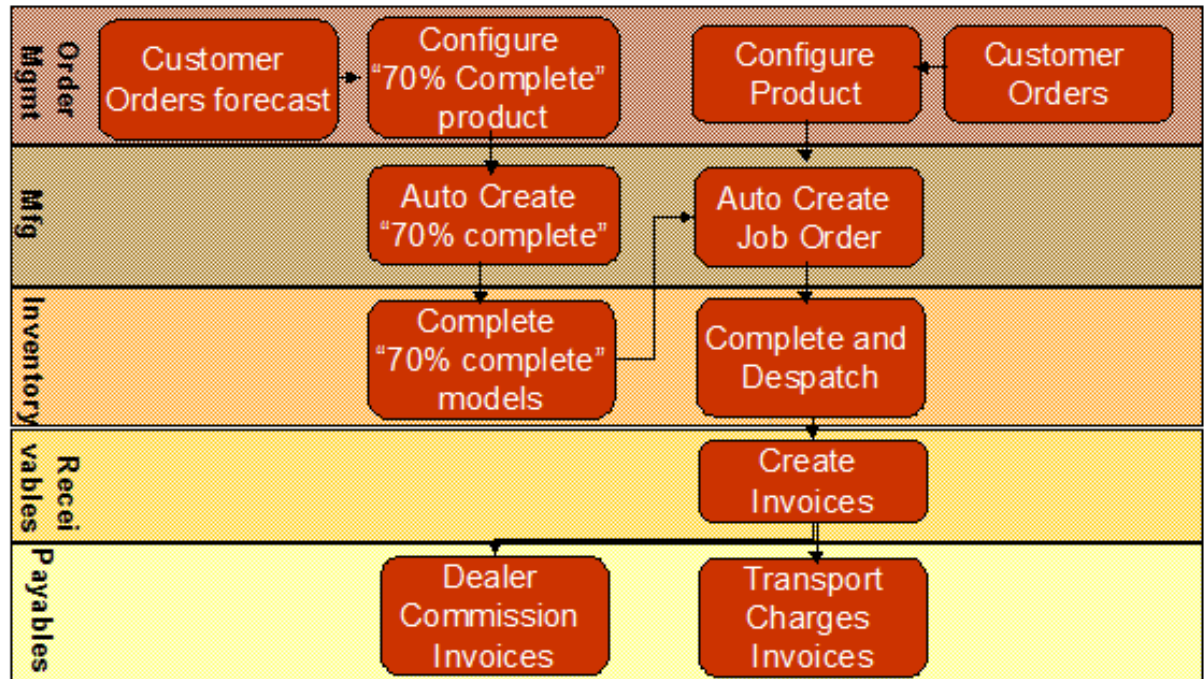
"With the implementation of Oracle EBS, we are sure that our internal controls are comprehensively strengthened. Chain-Sys' technology strength combined with their perseverance has provided us with one of the best solutions with high scalability" *Chairman and Managing Director*



Oracle EBS R12.1.1 Upgrade

Modules Implemented:

- Oracle General Ledger
- Oracle Payables
- Oracle Receivables
- Oracle Cash Management
- Oracle Fixed Assets
- Oracle Order Management
- Oracle Purchasing
- Oracle Inventory
- Oracle Bills of Material
- Oracle Work in Process
- Oracle Quality
- eChain – HR/Payroll



Multiple rollouts – Data Migration

Hypercom Corporation



“ [the] appLOAD tool helped us tremendously in reducing our project time lines for converting large amounts of data from various legacy systems into Oracle. We were able to achieve the data conversion with very limited technical resources. Especially support team is very responsive. We got every penny of our investment from this tool.”

Ravi Dayakar, Director, Enterprise Applications, Hypercom

CHAIN•SYS Products and Services: **appLOAD**

appLOAD Customer:



Scottsdale, AZ

Industry:

Payment

CHAIN-SYS Partner:

PWC, Oracle

PROBLEM: Large global roll-out; extensive volume and localizations
SOLUTION: global dataloading with no programming using appLOAD.

- General Ledger / Journal Entries
- AP Invoices (Both Open and Closed)
- AP Payments
- Vendors, Sites and Contacts
- Customers, Sites and Contacts
- AR Invoices (For both open and Closed)
- AR Receipts
- Fixed Assets
- Sales Orders and Lines (Both Open and Closed)
- Purchase Orders (Both Open and Closed)
- Items with Rev., Categories and Org. Assignments
- On Hand Quantities with Serial Numbers
- Item Cost (Standard)
- Service Contracts
- Employees and History
- BOMS
- Routings
- ECO
- Item Cost (Resource, Ohd, Material and Material Ohd)
- Approved Supplier list
- MRP Forecast
- Installed Base

Oracle EBS Data Migration/Integration



BILT is one of the largest paper manufacturing company, part of the **Avantha Group**.

Customer:



Industry:

Paper MFG

Implementation Partner:

Chain-sys

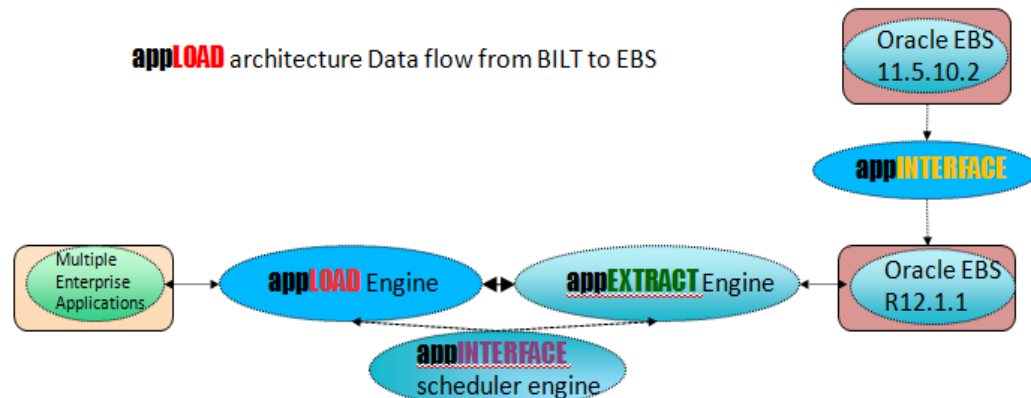
REVENUE:

\$1 Billion +

CHAIN•SYS Integration using **appINTERFACE** and **appMIGRATE**

PROBLEM: Large global roll-out; migration from 11.5.10.2 to R12.1.1; extensive interfacing of Enterprise applications; 1 TB of data; needed to keep source systems

SOLUTION: interfacing using appINTERFACE to all source systems (Oracle Retek, ARIBA, Honeywell's Optivision MES) migration of R11.5.10.2 to R12.1.1 using appMIGRATE



Our Happy Customers (partial list)



[Home](#)

[Corporate](#)

[Products](#)

[Resources](#)

ORACLE Platinum Partner

Services

Oracle EBS implementation
Web Applications, ...
[Read more](#)

1 2 3

e-Chain

appLOAD suite

Java Augmenter

Oracle EBS

Networking

appLOAD

appEXTRACT

appINTERFACE

appMIGRATE

appBI

SaaS

appLOAD Demo Ground

Case Studies

Brochures

e-Chain ERP/SCM Suite

Our Flagship Web-based Integrated ERP/SCM Suite



Chain-Sys Corporation's flagship product e-Chain is a fully integrated web based end to end Supply Chain

appLOAD™ suite

Productivity tools for Oracle E-Business Suite



Chain-Sys presents various powerful cost saving tools for Oracle E-Business Suite Applications: appLOAD,

Oracle E-Business Suite Consulting and Services



Oracle E-Business Suite implementation and custom web application development are the major services

ORACLE OPEN WORLD
September 19-23, 2010
Moscone Center
San Francisco

Register NOW and SAVE
Get into Grids, Clouds, and Datacenters for LESS

ORACLE

Partners



Customer Testimonials

appLOAD

“ appLOAD tool helped us tremendously in reducing our project time lines for converting large amounts of data from various legacy systems into Oracle

- Hypercom ”